



The Sprinter

Genuine accessories and Collection



Mercedes-Benz

5.30 a.m. - 6°C. 8 metres from target

COCKPIT

- 3 Heating and climate control
- 4 Comfort and design
- 6 Seats and mats
- 8 Infotainment
- 10 Communication

CONTOUR

- 12 Front
- 14 Manoeuvring and towing
- 16 Wheels

CARGO

- 18 Roof rack systems
- 20 Load compartment and transportation

COLLECTION

22



The challenges of a long working day hold no fears for the confident, sure-footed new Sprinter from Mercedes-Benz. Helping it rise to the occasion is a van concept of unprecedented flexibility and variety.

The Sprinter already offers almost infinite possibilities. But if you want to take things a little further, these pages will offer you some useful tips and suggestions. After all, there are no limits to individuality. Nor to the lengths we go to in our aim of offering you unlimited - and very personal - satisfaction.

5.31 a.m. +20°C. Raring to go



Auxiliary heater systems

Our auxiliary heaters are flexibly tailored to your needs. Whether you want preheating to clear frozen windows, or supplementary heating while you're en route, these systems always provide cosy warmth – even when the engine is switched off. (Available from 10.2006)

Water auxiliary heater
Order no. B6 656 0910

Upgrade kit, heater booster to water auxiliary heater
Order no. B6 656 0911

Air auxiliary heater
Order no. B6 656 0912/13

Radio remote control
(optional, see price list)
Order no. B6 656 0606

Air conditioning system

Select your temperature, at the touch of a button, and the sensor-controlled air conditioning system will maintain it – both in summer and in winter. The system also has a dehumidifying effect, which helps keep the windows clear. And with its integrated air filter, it also protects against dust and pollen. The air conditioning system can be fitted at a specialist workshop, for example your Mercedes-Benz service centre.

Order no. B6 656 0770

5.35 a.m. Welcome to your mobile office

COCKPIT

Comfort and design



Coolbox

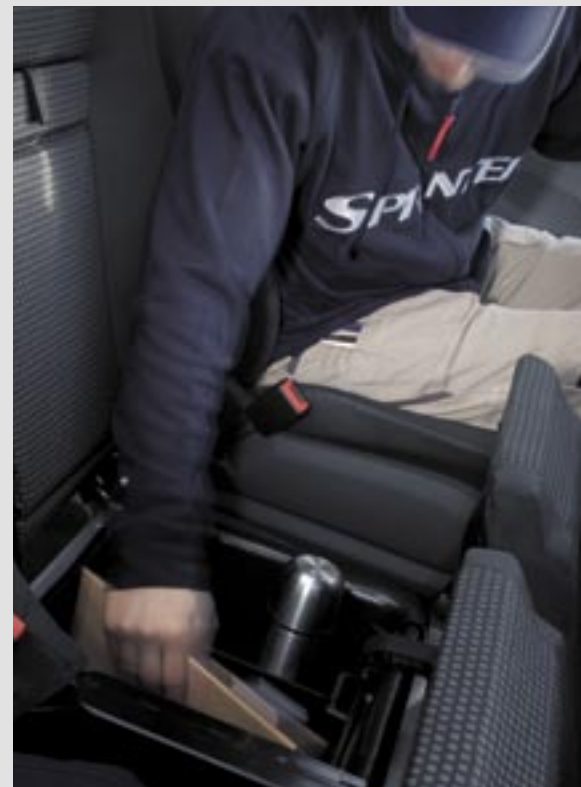
Even on really long days or long journeys the coolbox, made of hygienic, easy-to-clean plastic, provides constant and dependable cooling performance - thanks to the on-board 12-volt power supply. The box can be firmly secured in the load compartment with the aid of the special strap system. It's also easy to carry, using the handy carry straps. The coolbox has a volume of 16 litres.

Order no. B6 656 0300

Stowage box in twin co-driver's seat

The stowage box, made of impact-resistant plastic, fits flush into the seat base frame and provides generous stowage space and organisation in the left-hand part of the seat base. A divider is supplied and you can also insert tabs. The stowage box prevents damage to the inside of the seat base and prevents small items from getting lost. The stowage box is simple to install - just drop it into place in the seat base. The flush-fitting design means that the stowage box is self-securing.

Order no. B6 656 0921





Cockpit trim

In perfect trim: two alternative trim packages are available for the cockpit highlights and the centre console trim panel. These trim components blend smoothly with the overall cockpit styling and lend the interior an individual feel. Both versions - black walnut [1] and the silver 3D paint finish [2] - are made of high-grade plastic. They are also easy to fit: simply take out the standard trim parts and swap them for the accessories.

Order no: see price list



Writing surface

This practical writing surface simply hooks over the steering wheel. It comes with handy clips for holding your papers.

Order no. B6 656 0388



Office bag

This elegant vinyl briefcase-cum-laptop bag converts into a portable office in moments. The office bag can be strapped around the backrest using the integrated belt, while a further belt wraps round the neck rest, allowing the bag to remain open while driving. This way you can keep everything from your mobile phone to a DIN A4 writing block conveniently close to hand.

Order no. B6 656 0417



Litter bag

Dispose of litter easily and elegantly in this 5-litre vinyl bag. The hygienic liner bags are easily removed. Take out one bag and the next bag moves into position automatically.

Order no. B6 656 0320



Spectacles case

The spectacles case provides first-class protection for your spectacles - and quick access via a large opening.

Order no. B6 626 0275

Incidentally, your Mercedes-Benz service centre also stocks a selection of exclusive designer-styled sunglasses as part of the "DriversLine" commercial vehicle collection.

6.45 a.m. Time for breakfast. No messing!



[1]



Rubber floor mats

Amazing attention to detail: the rubber floor mats, made of robust, dirt-repellent natural rubber, fit flush with the interior of the vehicle. Zip fasteners securely connect adjacent sections of mat. This provides extensive floor coverage with no intervening gaps, and prevents the mats from sliding around. At the same time the mats can also be easily removed for cleaning.

See price list for order no.



Rep floor mats

The custom-fitting, hard-wearing, easy-to-clean rep floor mats are fitted with a sewn-in velcro fastener that prevents them from sliding around the floor. The exclusive Sprinter lettering greets you every time you step on board.

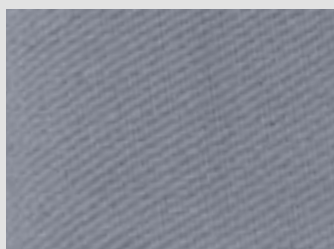
See price list for order no.



Velour floor mats

The soft velours floor mats, with their Sprinter lettering and their custom fit to prevent sliding, create an elegant impression on entering the vehicle. Extensive coverage of the footwell creates a comfortable, cosy feel.

See price list for order no.



[2] "Brasao black" seat covers

Superb fit, regular design: the colour and design of these seat covers are modelled on those of the original seats. They are available for almost all seat versions. At the same time, special functions like the integrated table on the twin co-driver's seat, and the Isofix attachment system, are retained in full.

See price list for order no.

[1] "Alcanta grey" seat covers

Luxurious protection: with their velvety suede finish and elegant design, the Alcanta range of seat covers provide enhanced comfort without compromising the intelligent seat functionality.

See price list for order no.

Protective covers

Just in case: the robust oil- and dirt-repellent protective covers are easy to fit and can be used either as a temporary measure, when visiting the workshop, or permanently, for example on the construction site.

See price list for order no.



DUO plus child seat

Big safety for small passengers (age 8 months to 4 years): the DUO plus child seat is compatible with the automatic child seat recognition system and can therefore be used on the co-driver's seat. The head section has additional tethering to reduce pivoting and rotational movement. The seat snaps easily and securely into place using the ISO-FIX attachment system, and can be adjusted to the sitting, sleep and reclining positions in a single adjustment. The robust "DaimlerSquare" seat cover is easy to remove and wash.

See price list for order no.

Further child safety products are available as part of the Mercedes-Benz Child Safety range. For more information, please consult your Mercedes-Benz service centre.

MP3 radio Sound ONE

Exclusive sound: with 4 x 45 W output for radio, CD or MP3 (can be controlled from the multifunction steering wheel). The detachable anti-theft front panel incorporates an AUX port for your MP3 player. Variable button illumination colour.

Order no. B6 656 0722

**Sound 5 radio**

CD radio (can be operated via multifunction steering wheel) with 25 station presets and connection for MP3 CD changer or MP3 player. The Sound 5 comes with ID3 track display for the CD changer.

Order no. B6 656 0720

**Sound 50 APS navigation**

All-inclusive system: the Sound 50 APS offers dynamic routing capability (RDS/TMC) for optimal navigation, easy telephoning in conjunction with an integrated hands-free system and rich CD and radio sound. It can be controlled from the multifunction steering wheel.

Order no. B6 656 0744

1 DIN CD changer

The six-disc MP3-capable CD changer is seamlessly integrated in the cockpit and can be controlled from the multifunction steering wheel.

Order no. B6 656 0798

**CD box**

Safely stored and always at your fingertips: the CD box provides protection against dust and sunlight for up to four CDs.

Order no. B6 626 0221

**Connection for portable MP3 players**

Easily retrofitted AUX port for external playback devices like MP3 players or portable CD players.

(for Sound 5) Order no. B6 656 0107

(for Sound 20/50 APS/COMAND) Order no. B6 656 0108

MP3 CD changer

The (six-disc) MP3 CD changer is ID3-compatible, can read CD-R/RW and can be controlled from the multifunction steering wheel.

Order no. B6 656 0580



7.34 a.m. Firmly on track



COMAND APS navigation

Car hi-fi and intelligent navigation technology rolled into one system. The twin tuner with 4 x 40 W amplifier gives superb sound performance, while a 6.5" colour display and integrated drive (audio/navigation DVD) keep the driver on track at all times. A connection for a CD changer is provided. COMAND can be controlled from the multifunction steering wheel. Order no. B6 656 0747



Flexible entertainment: the swivelling reversing camera monitor can also be connected to a portable DVD player. How about a film? More on page 14.

**Hands-free system (integrated)**

Communicate in comfort: the integrated hands-free system is compatible with all standard commercial mobile phones. It can also be conveniently operated from the optional multifunction steering wheel. In this case the phone directory and other functions are displayed in the instrument cluster. And since it's possible to change to a different mobile phone simply by changing the cradle, the system is also future-proof. (Available from 08.2006)
Order no. B6 656 0795

8.48 a.m. Hand on the wheel, ear to the ground



Mobile phone cradles

Cradles are available to fit most standard commercial mobile phones. In every case you're assured of top sound quality and advanced ergonomics. And you don't need to visit a workshop for fitting.

Mobile phone cradles provide the link between your mobile phone and the phone console. To start using a Mercedes-Benz hands-free system with ex-works pre-installation for a mobile phone, all you need is the correct mobile phone cradle.

To retrofit a hands-free system, you need the mobile phone retrofit kit, a mobile phone console and a cradle that matches your particular model of mobile phone.

See price list for order no.



Hands-free system (non-integrated)

For all drivers wishing to operate their mobile phone with Sound ONE, Sound 5 or the radio pre-installation, the universal hands-free system is easy to view and simple to fit. (Available from 08.2006)

Order no. B6 656 0796

9.02 a.m. The new day's looking good

CONTOUR

Front



[1]

[1] Chrome highlights on radiator grille

Brightly embellished: the bright chrome radiator grille highlights add further appeal.

Order no. B6 656 0948



Spare bulb box

Space-saving and close to hand: the spare bulb box contains a full set of standard bulbs.

Order no. B6 656 0805

[2] Exterior sun visor

A glaring improvement: the exterior sun visor prevents dazzle even when the sun is low in the sky - but without restricting the driver's field of view. It also emphasises the Sprinter's sporty front-end appearance. (Available from 08.2006)

Order no. B6 656 0920

[3] Side window wind deflector

When the window is ajar, the custom-fitting wind deflector prevents dust, moisture and even insects from entering the vehicle, and prevents fogging of the windows. Its draught-inhibiting function brings further comfort benefits.

Order no. B6 656 0104

11.52 a.m. Looking ahead - even in reverse



Reversing camera

Systematically coordinated innovation: the reversing camera assists the driver right from the start of the reversing manoeuvre. The camera is activated automatically, as soon as reverse gear is engaged. There's also a built-in microphone, so you can not only see but hear what's going on behind the vehicle. The camera image is conveniently displayed either on the COMAND display or on the reversing camera monitor.

Order no. B6 656 0808

Monitor for reversing camera

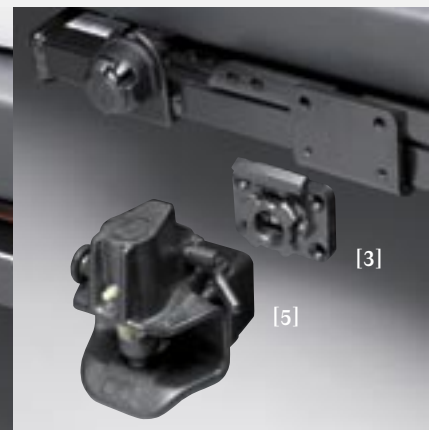
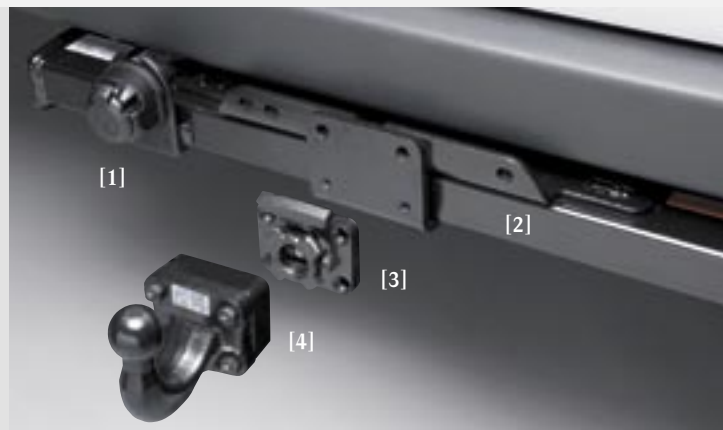
Multifunctional: the tilt-and-swivel reversing camera monitor is optimally adjustable. The 7" TFT monitor is automatically activated when the vehicle goes into reverse. The display and volume can be intuitively controlled using the buttons on the front side of the unit. During rest breaks, the monitor can be connected to a portable DVD player. The monitor is pre-fitted in the stowage tray and can be quickly and easily extended and retracted.

Order no. B6 656 0809

Wiring for reversing camera and monitor

If you don't have pre-installation for the reversing camera, then not to worry. With the special installation kit, you still don't need to miss out on this system. (Not illustrated)

Order no. B6 656 0840



Trailer coupling

Our range of trailer couplings allows you to choose between various system versions and components to suit your individual requirements. Maximum towing capacities range from 2.0 to 3.5 t, with maximum drawbar loads of up to 140 kg.

[1] Trailer wiring kits

Lighting and signalling systems for your trailer.

Order no. B6 656 0612/13

[2] Cross-member

Basis for fitting fixed and detachable (Variobloc) ball-head or jaw-type trailer couplings.

See price list for order no.

[3] Variobloc detachable trailer coupling system

Robust and flexible: with Variobloc, swapping between different trailer couplings is never a problem.

Order no. B6 684 8912

[4] Detachable ball head for Variobloc system

Order no. B6 656 0895

[5] Detachable jaw coupling for Variobloc system

Order no. B6 684 8916

Ball-type trailer coupling (complete system)

The complete system has the ball head already welded to the cross-member. (Not illustrated)

See price list for order no.

Ball head for trailer coupling (fixed)

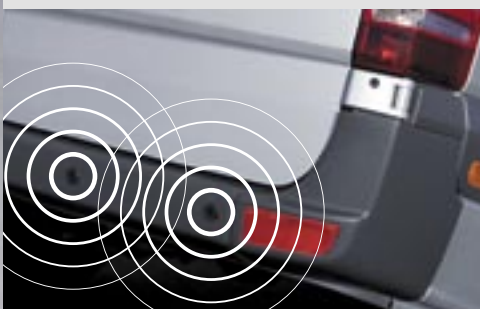
The ball head bolts on to the cross-member. (Not illustrated)

Order no. B6 656 0896

Jaw for trailer coupling (fixed)

The jaw bolts on to the cross-member. Can be swapped for the fixed ball head. (Not illustrated)

Order no. B6 684 8916



Ultrasonic reversing aid

The reversing aid assists the driver when reversing by ultrasonically detecting obstacles up to a distance of 1.60 metres behind the vehicle. Audible signals aid safe manoeuvring and parking. The reversing aid retains its functionality even when a trailer coupling is fitted.

Order no. B6 656 0666



Tow rope

Provides robust break-down assistance. Can be used on any vehicle with a gross combination weight not exceeding 4 t.

Order no. B6 656 0634

Tow rod

Pulling power: the multi-section steel tow rod ensures smooth towing. It can be used on any vehicle with a gross combination weight not exceeding 3.5 t.

Order no. B6 758 0013



[1]

[1] 16" light-alloy wheel

High-quality aluminium six-spoke wheel, painted brilliant silver.

Wheel size: 6.5 J x 16 ET 62

Tyre size: 235/65R 16C

Order no. B6 656 0389



Hubcap with chrome star

The hubcap protects the wheel hub against dirt and is also elegantly eye-catching.

Order no. B6 647 0202



17" light-alloy wheel

A gleaming set: seven-twin-spoke wheel in high-quality aluminium, painted brilliant silver.

(Available from 10.2006)

Wheel size: 6.5 J x 17 ET 62

Tyre size: 235/60R 17C

Order no. B6 656 0390



Full wheel trim

Brilliant silver finish: the 16" plastic full wheel trim fills two needs at once: it protects the wheel against dirt and at the same time enhances the appearance of your Sprinter.

Order no. B6 656 0733



Rim lock set

Can only be unlocked with the coded key:
One rim lock per light-alloy wheel provides simple yet effective protection.

Order no. B6 601 0040

Wheel bolts

Secure your light-alloy wheels.

Order no. B6 656 0677



Quick-fit snow chains

Exclusive to the Sprinter: the snow chains, of high-strength chromium-manganese micrograin stainless steel with reinforced chain links, provide excellent grip on snow and ice. Needless to say they are also quick and easy to fit. (Available from 10.2006)

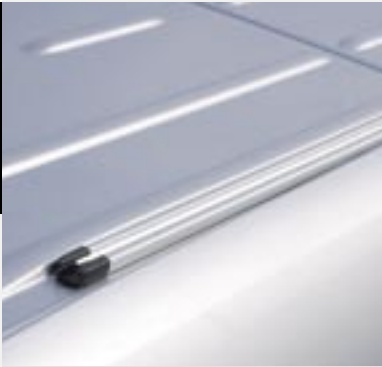
See price list for order no.



Mudflaps

Made of long-life plastic, the mudflaps meet the highest standards of quality and functionality. They help to protect the body against dirt and scratching and at the same time improve visibility for following vehicles.

See price list for order no.



C-rails

Basis for roof transport: the C-rails provide the basis for fitting roof racks and cargo baskets. They offer maximum roof loads of 150 kg for high-roof versions (LH2) and 300 kg for standard-roof versions (LH1).

See price list for order no.



Basic carrier bars

The robust basic carrier bars can be mounted in any position on the C-rails. The strong, 30 x 30 mm steel bars always provide a level loading surface, and their plastic sheathing protects both the bars and the cargo. The maximum roof load per cross-bar is 50 kg (including bar). N.B.: observe overall maximum roof load.

Cross-bar including 2 supports

Order no. B6 656 0800

3 cross-bars including 6 supports

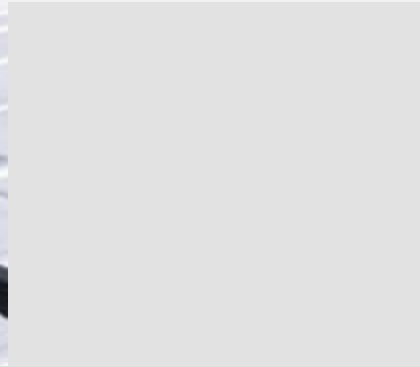
Order no. B6 656 0801



High-standing bracket set

A quick and easy way of preventing all types of cargo mounted on the basic carrier bars from shifting sideways.

Order no. B6 656 0806



The accessories sales consultant at your Mercedes-Benz service centre will be pleased to help you configure the right components for your vehicle.



Ladder rack

A wide variety of ladders can be safely transported on the basic carrier bars using the ladder rack.

Order no. B6 656 0807



Cargo basket

Flexible load transport: the cargo basket can be used to transport many different types of cargo and can be adapted to any length of vehicle. The accessories sales consultant at your Mercedes-Benz service centre will be pleased to help you configure the right components for your vehicle. The loading roller for the cargo basket and roof rack should be ordered separately.

See price list for order no.



12.11 p.m. Going up in the world



Lean-to ladder with transport securing system

This innovative cargo-carrying accessory (patent pending) is always on board. The light-alloy ladder simply pulls out from the guide rails and can then be tilted down ready for use. The ladder facilitates safe loading and unloading of roof racks and cargo baskets under all circumstances. The ladder can, of course, be used in other positions as well. When used at the sides of the vehicle, there is even provision to prevent it from slipping sideways. After use, the ladder can be simply reinserted in the guide rails and securely locked in place. Best of all: it doesn't restrict the loading surface.

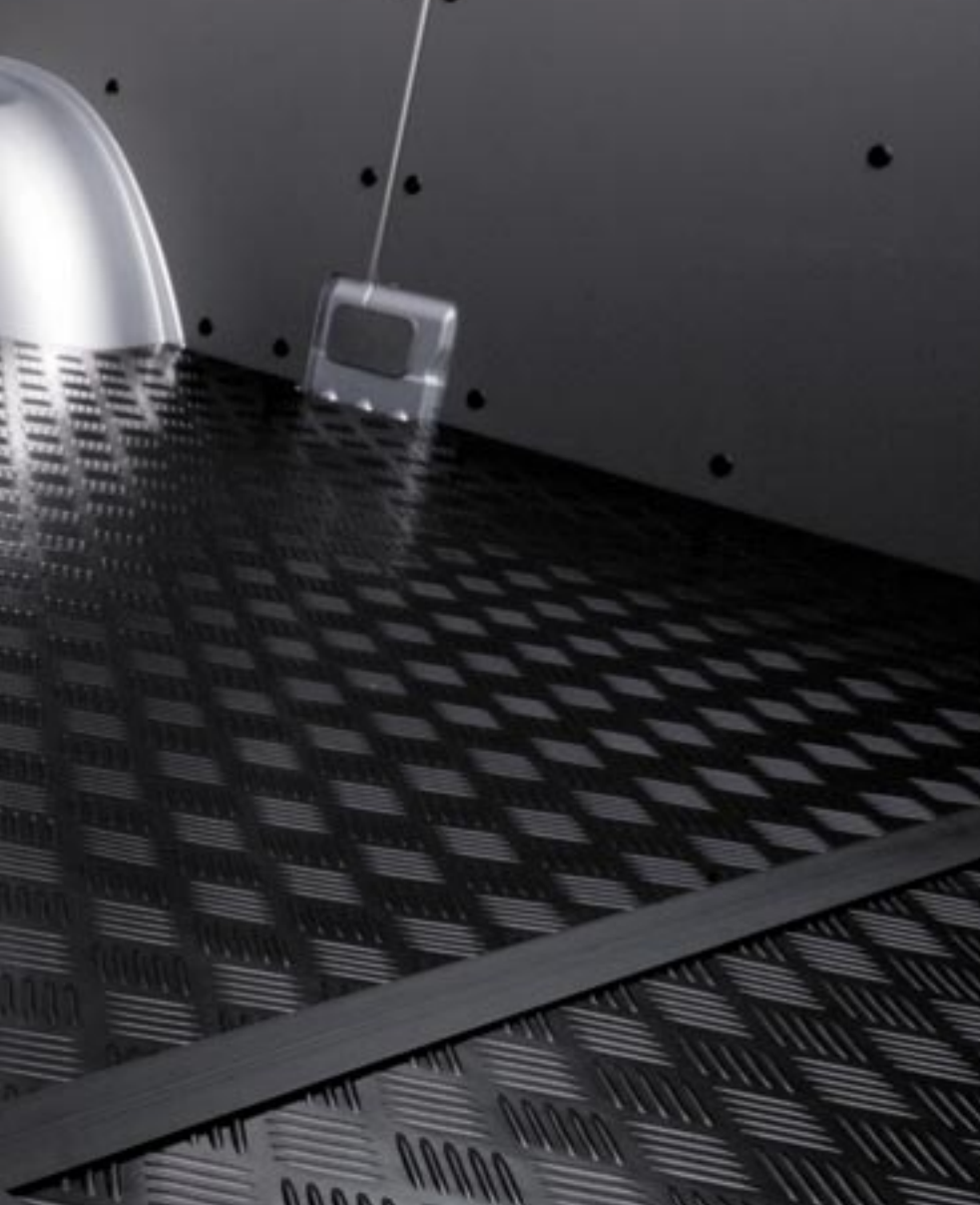
Order no. B6 656 0777

12.38 p.m. Securely stowed!



Pallet support

The pallet support for the Sprinter, made of hardwood plywood, allows stable side-by-side transport of two Europallets. It is still possible to enter and exit the vehicle safely and conveniently, thanks to the integrated step. See price list for order no.



Non-slip mats

Slip-resistant transport: the flush-fitting, modular mat set is an effective way of protecting the wood floor in the load compartment from dirt and damage. The load-securing rings in the load compartment remain fully accessible. The mats are secured to the floor in the door area by mouldings. The mat set, which is made of foam-backed vulcanite, also has vibration and sound-damping properties. It is easy to lay.

See price list for order no.

Load-securing straps and rings

The cargo strap system, which attaches easily to the pre-fitted lashing rails, provides an unbeatable and simple way of securing your cargo.

[1] *Four double-stud rings, without straps*
Order no. B6 656 0103

[2] *Ratchet strap with two double-stud rings*
Order no. B6 656 0102



Tachograph

This type of tachograph is mandatory under EU law for vehicles that are registered as commercial vehicles and whose gross weight exceeds 3.5 t, and also for vehicles carrying 9 passengers (plus driver) or more. It provides tamper-proof recording of speeds and rest times. The data is rapidly and easily acquired and can be electronically evaluated. Outside the EU, the modular tachograph can be used.

Digital tachograph
Order no. B6 656 0870/71

Modular tachograph
Order no. B6 656 0874

Wiring
Order no. B6 656 0872/73

Parameterisable special module

For retrofitting and modification of special electrical components and systems of all kinds, this special module provides a defined and secure interface (10 inputs, 20 outputs) with the vehicle's electronic system.

Order no. B6 656 0734

5.49 p.m. You wear it well



[1] Baseball cap

High-quality double sandwich cap made of 100% brushed cotton with elaborately embroidered silver Sprinter lettering. In Atlantis blue, with peak underside in contrasting colour.

Order no. B6 787 3063

[2] Messenger bag

This contemporary, versatile messenger bag is made of hard-wearing canvas material. It is available in Atlantis blue, with Sprinter lettering and Mercedes-Benz logo.

Order no. B6 787 3082

[3] Hooded jacket

The super-soft, sporty-style hooded jacket is available in Atlantis blue, with large embroidered Sprinter lettering on the chest and Mercedes-Benz logo.

For order number and sizes, see price list

[4] Worker's polo shirt

Sporty piqué polo shirt in Atlantis blue, with embroidered Sprinter lettering and Mercedes-Benz logo.

For order number and sizes, see price list

[5] Reversible high-visibility safety jacket

This high-quality, sporty, wind and water-proof, breathable hooded safety jacket reverses in moments into a high-visibility safety jacket (orange with silver reflective strips) conforming to EU standard EN 471.

For order number and sizes, see price list



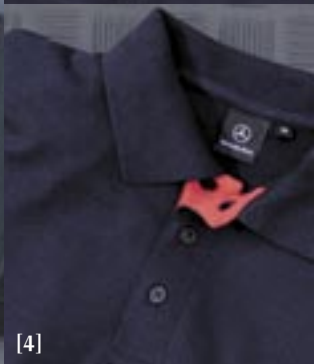
[1]



[2]



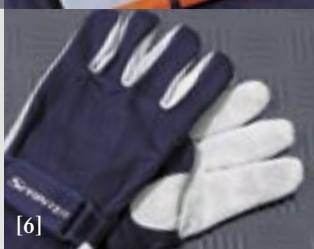
[3]



[4]



[5]



[6]

[6] Work gloves

Get stuck in with these robust work gloves made of skin-friendly natural grey split cowhide with a durable, air-permeable cotton back. They are available in Atlantis blue with Sprinter lettering and Mercedes-Benz logo.

Order no. B6 787 3060



Fibre-glass automatic guest umbrella

This gust-resistant, extremely light-weight fibreglass automatic umbrella with teflon-coated polyester canopy and ergonomically designed rubber handle provides stylish protection against the elements. Size: approx. 125 cm.

Order no. B6 787 3064



Three-hand gentlemen's watch

All-time star: this gentlemen's watch with Miyota S13 quartz movement, scratch-proof domed mineral glass and matt polished stainless steel case is a masterpiece of precision engineering. The black matt deluxe dial with stylish hour markings makes a bold design statement. (2-year guarantee).

Order no. B6 787 3085

[6] Work gloves

Get stuck in with these robust work gloves made of skin-friendly natural grey split cowhide with a durable, air-permeable cotton back. They are available in Atlantis blue with Sprinter lettering and Mercedes-Benz logo.

Order no. B6 787 3060



[1]



[2]



[3]



[4]

1:43 Sprinter model vehicles

Great stuff: our model vehicles contain a wealth of realistic detail. All models are elaborately manufactured using the latest computer technology and are painted in Mercedes-Benz paint colours. (Available from 07.2006)

1:43 crewbus, hibiscus red

Order no. B6 600 0760

1:43 crewbus, brilliant silver metallic

Order no. B6 600 0761

1:43 panel van, carbon black metallic

Order no. B6 600 0762

1:43 panel van, arctic white

Order no. B6 600 0763

1:43 panel van, arctic white, "Service 24h"

Order no. B6 600 0764

1:87 Sprinter model vehicles

These faithful detailed replicas of their bigger brothers come in panel van, pickup and crewbus versions, so collectors can mix and match as they please.

[1] *1:87 crewbus, hibiscus red*

Order no. B6 600 0755

[2] *1:87 crewbus, carbon black metallic*

Order no. B6 600 0756

[3] *1:87 panel van, arctic white*

Order no. B6 600 0757

[4] *1:87 panel van, jasper blue metallic*

Order no. B6 600 0758

1:87 pickup, calcite yellow

Order no. B6 600 0759



Gentlemen's chronograph watch

Elegant times: the chronograph features a Miyota OS20 quartz movement, a matt polished stainless steel case, water-resistant to 10 ATM, and domed mineral glass. The black matt deluxe dial with polished luminous hands and leather strap emphasises the clarity of the design. (2-year guarantee).

Order no. B6 787 3132

Sprinter pin

Neat as a pin: the photographic detail of this hand-made cast metal Sprinter pin with epoxy resin finish gives it lasting appeal.

Order no. B6 787 3073



Sprinter key-ring lanyard

Keep your keys secure, with the sporty Sprinter key-ring lanyard with reflective side seams.

Order no. B6 787 3068



For further information, please contact your Mercedes-Benz service centre.

The information contained in this brochure applies to the German market at the time of going to press (01.04.06). Product details subject to change.

Available as long as stocks last. We accept no liability for printing or other errors.

DaimlerChrysler AG, 70546 Stuttgart, VT/PM 4710 · 1B301 · 02-00/0406 Printed in Germany/Imprimé en Allemagne